

1986

1986

3



Mimar Sinan University



MSGSU

Açık Bilim Sanat Arşivi

Istanbul • Turkey



j
-3



MSGSÜ

Açık Bilim Sanat Arşivi

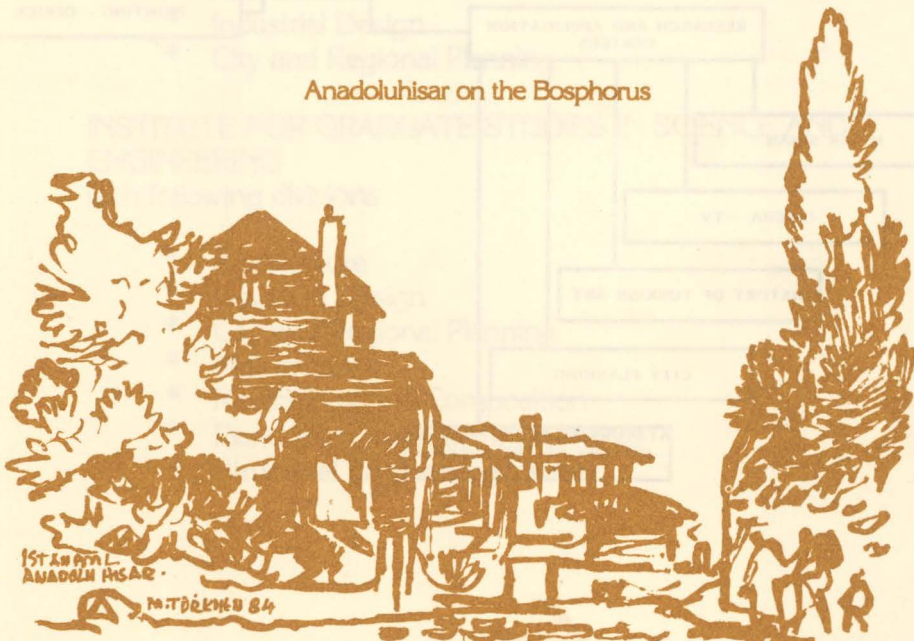


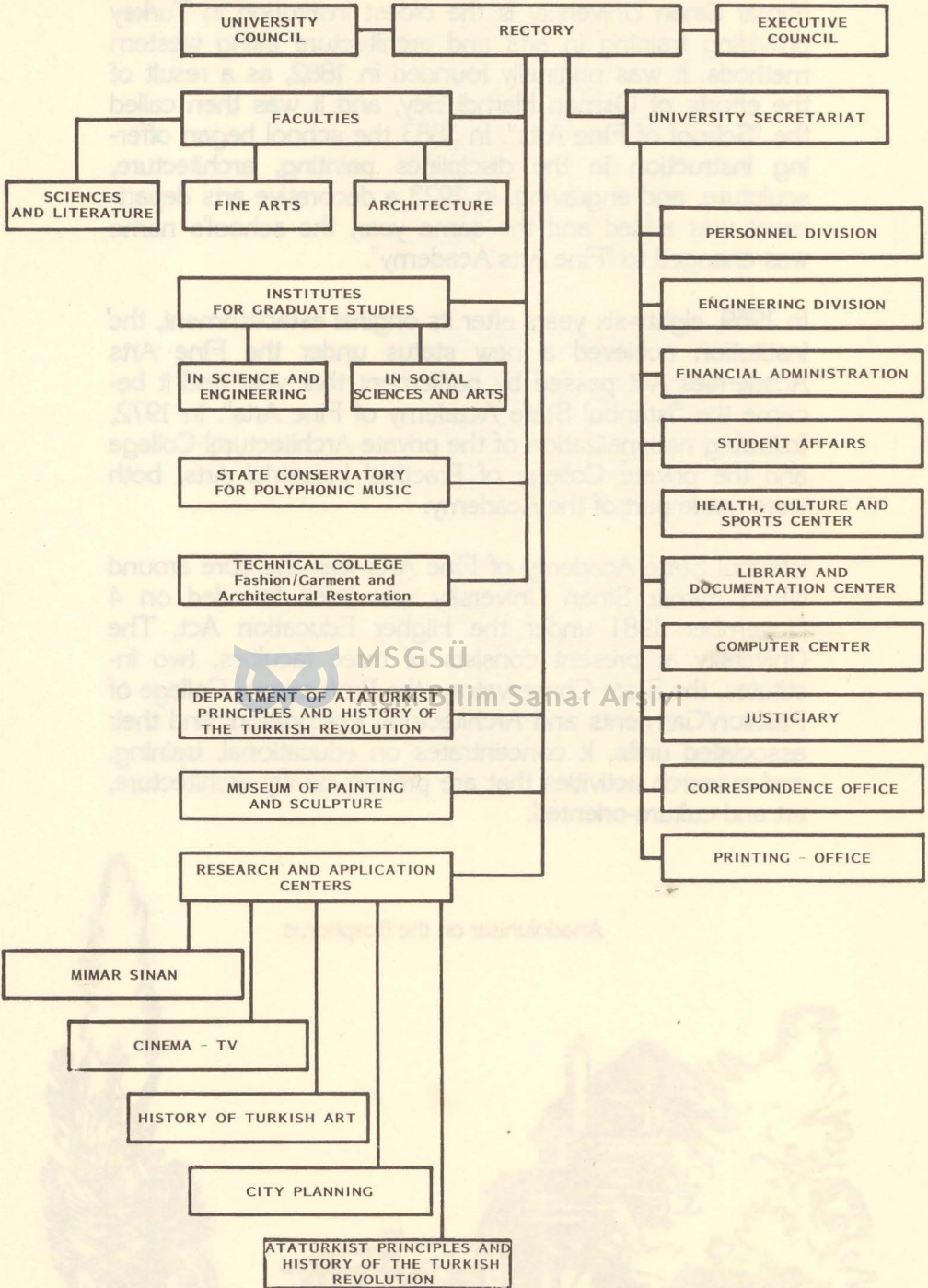
Mimar Sinan University is the oldest institution in Turkey providing training in arts and architecture using western methods. It was originally founded in 1882, as a result of the efforts of Osman Hamdi Bey, and it was then called the "School of Fine Arts". In 1883 the school began offering instruction in the disciplines painting, architecture, sculpture, and engraving. In 1923 a decorative arts department was added and the same year, the school's name was changed to "Fine Arts Academy".

In 1969, eighty-six years after its original establishment, the institution achieved a new status under the Fine Arts Academies Act passed by parliament that year and it became the "Istanbul State Academy of Fine Arts". In 1972, following nationalization of the private Architectural College and the private College of Practical Industrial Arts, both were made part of the Academy.

Istanbul State Academy of Fine Arts was the core around which Mimar Sinan University was itself founded on 4 November 1981 under the Higher Education Act. The University at present consists of three faculties, two institutes, the State Conservatory, the Professional College of Fashion/Garments and Architectural Restoration, and their associated units. It concentrates on educational, training, and research activities that are predominantly architecture, art and culture-oriented.

Anadoluhisar on the Bosphorus





THE EDUCATIONAL UNITS OF MIMAR SINAN UNIVERSITY

FACULTY OF SCIENCE AND LITERATURE with following departments

- * Mathematics
- * Statistics
- * Turkish Language and Literature
- * Archeology and Art History
- * Sociology
- * History
- * Physics

FACULTY OF FINE ARTS with following departments

- * Painting
- * Sculpture
- * Theatrical and Scenic Arts
- * Applied Arts
- * Traditional Turkish Handicrafts

THE FACULTY OF ARCHITECTURE with following departments

- * Architecture
- * Industrial Design
- * City and Regional Planning

INSTITUTE FOR GRADUATE STUDIES IN SCIENCE AND ENGINEERING with following divisions

- * Architecture
- * Industrial Design
- * City and Regional Planning
- * Mathematics
- * Musicology and Composition
- * Piano and Orchestral Instruments
- * Structural Engineering

INSTITUTE FOR GRADUATE STUDIES IN SOCIAL
SCIENCES AND ARTS

with following divisions

- * Applied Arts
- * Ballet and Theatre
- * History
- * Painting
- * Opera and Vocal Music
- * Sociology
- * Sculpture
- * Theatrical and Scenic Arts
- * Traditional Turkish Handicrafts
- * Turkish Islamic Arts
- * Turkish Literature
- * Western and Modern Arts

MSU STATE CONSERVATORY

with following departments

- * Instrumental Music and Composition
- * Musicology
- * Theatrical and Scenic Arts

MSU PROFESSIONAL COLLEGE

with following technical programs

- * Fashion/Garment
- * Architectural Restoration

DEPARTMENT OF ATATÜRKIST PRINCIPLES AND THE
HISTORY OF THE TURKISH REVOLUTION

This is a central unit giving education to all departments of the University. In addition to foregoing educational units the following centers for research and application have been founded in order to carry out research and applications in scientific, artistic, and technological areas at Mimar Sinan University.

MSU CENTER FOR CINEMA AND TELEVISION RE- SEARCH AND APPLICATIONS

- * MSU Center for Research into the History of Turkish Art
- * MSU Center for Research into Mimar Sinan
- * MSU Center for City Planning Research and Applications
- * MSU Center for Research in Atatürkist Principles and the History of the Turkish Revolution

MSU CENTER FOR CINEMA AND TELEVISION RE- SEARCH AND APPLICATIONS

The Center for Cinema and Television Research and Applications engages in research and archival work and also provides extra-mural education. Another of its aims is to fill the needs of the Turkish cinema and television industries for trained technical and artistic personnel.



Açık Bilim Sanat Arşivi

MSU CENTER FOR RESEARCH INTO THE HISTORY OF TURKISH ART

The Center for Research into the History of Turkish Art was originally founded in 1952 as the Institute of Turkish Art History when the artist Zeki Faik İzer was director of the Academy. The center was founded to carry out research and studies in Turkish Art, provide instructions, and produce publications.

When the State Fine Arts Academy was reorganized as Mimar Sinan University in 1983, this unit became the Center for Research into the history of Turkish Art, part of the Faculty of Science and Literature. It is involved in making studies and an inventory of works of Turkish art scattered about three continents and it publishes the results of its work.

MSU CENTER FOR RESEARCH INTO MIMAR SINAN

One of the goals of the center for Research into Sinan the Architect is to carry out research into the life, identity, craft, works, and organizational activities of Sinan, the 16th century architect who is the namesake of Mimar Sinan University. It also performs archival functions and publishes the results of its studies. Other goals include:

- * Examining the artistic personality of Sinan and comparing him with his contemporary artists;
- * Investigating the origins of Sinan's style, techniques, and architectural elements and the materials he used;
- * Identifying publications about Sinan written in different languages and developing a Bibliography;
- * Producing a complete inventory of all Sinan's works and determining their locations, present conditions, and the circumstances of those no longer in existence;
- * Investigating the whole body and the sources of Turkish art and architecture as an important part of Turkish natural culture and examining the periods before and after Sinan;
- * Researching Turkish architects who lived during the Ottoman period and before it, examining the organization of the Corps of Privy Architects, and investigating the ways in which architects during the empire were trained and performed their profession;
- * Maintaining archives of the activities enumerated above and as means allow publishing the results or having them published;
- * Carrying out investigations concerning the protection, restoration, and upkeep of works of

Turkish architecture and architectural sites, making admonitory publications, and with this aim cooperating with the Restoration Department of the Faculty of Architecture;

- * Collecting in its own library publications (or microfilms of Publications) in Turkish or other languages concerning Turkish art and architecture; beginning with the most important of these works, translating those written in foreign languages into Turkish and those written in the Ottoman script into the modern alphabet so as to make them available for use by those concerned;
- * Cooperating with scientific and scholarly bodies, government organizations, and scientists and scholars in Turkey and abroad as required by the foregoing activities and organizing tours for research purposes.

MSU CENTER FOR CITY PLANNING RESEARCH AND APPLICATIONS

Açık Bilim Sanat Arşivi

The goals of the Center for City Planning Research and Applications are the following:

- * Contributing to examinations, research, and training about city planning and carrying out applications; examining the historical development of traditional Turkish attitudes towards cities, the founding of Turkish cities, and existing structures; producing publications on such matters and acquainting people with existing publications;
- * Collecting works, studies, documents, and reference works in Turkish or other languages on the subject of Turkish city planning and urban development in particular and establishing and developing archives for them;

- * Carrying out research into the protection, restoration, and renewal of old Turkish cities and city textures; establishing relations with other institutions concerned with such matters; publishing the results and disseminating them to those concerned;
- * Participating in congresses related to this subject in Turkey and abroad; organizing similar meetings, conferences, and exhibitions;
- * Preparing short documentary films on traditional and contemporary Turkish city planning and development; determining characteristic settlement patterns in Turkey by means of photographs and other means on location; preparing and documenting regional models;
- * Documenting characteristic examples of Turkish settlements and cities;
- * Cooperating with relevant public and private organizations, institutions, research centers, institutes, and independent investigators into such subjects in Turkey and abroad;
- * Establishing temporary or standing commissions for scientific research and studies; holding seminars and courses that will make a contribution to city planning instruction organizing symposia, colloquia, and similar activities;
- * Carrying out the secretarial work of the Turkish Committee for the World City Planning Day; organizing the colloquia traditionally held on World City Planning Day during the first week of November each year; organizing City Planning Day activities in Turkey.

MSU CENTER FOR RESEARCH IN ATATÜRKIST PRINCIPLES AND THE HISTORY OF THE TURKISH REVOLUTION

The Center for Research and applications in Atatürkist Principles and the History of the Turkish Revolution was founded in 1985. Its principal goals and duties are the following:

- * Ensuring that research is conducted into Atatürkist principles and into the history of the Turkish Revolution and publishing the results; collecting Turkish and foreign publications on these subjects and establishing an archival documentation unit that will serve as a source of reference works;
- * Collecting information concerning methods of application, acquired experience, and materials for instructional use and turning these into classroom materials;
- * Establishing mutual support, training, research, and correspondence relations among universities and relevant public and private institutions and organizations;
- * While taking advantage of the units of Mimar Sinan University and cooperating with them, collecting examples of slides, pictures, reproductions, tapes, manuscripts, models, etc. of monuments, statues, busts, masks, paintings, portraits, photographs, films, writings, architectural projects, speeches, compositions, poems, and similar works of art that are concerned with Atatürk and the revolutionary history of the Republic of Turkey; when necessary, undertaking preparatory work to ensure that these are reproduced and made ready for dissemination; when requested, participating in juries or designate candidates for competitions in such matters;

- * Organizing courses, seminars, concerts, conferences, symposia, colloquia, panel discussions, and similar scientific and scholarly meetings and congresses in order to achieve the goals and fulfill the duties of the center as indicated above.

RESEARCH ACTIVITIES AND THE AREAS OF RESEARCH

Research and application centers have been set up in Mimar Sinan University in order to conduct the research that is the fundamental function of a university in scientific, artistic, and technological areas and to make use of the results of such activities. The research and applications carried out by these centers are conducted within the framework of their own areas of interest.

In addition to these research and application centers, research is also initiated and carried out by the members of the University's faculty and their assistants on an individual or joint basis in scientific, artistic and technological areas and such activities are provided with support by the University's Research Fund in line with generally accepted principles and within the framework of a specific program.

Besides such research activities, the members of the University's faculty also carry out personal research into their own areas of interest. The research carried out under various advanced degree, artistic proficiency, and doctorate studies within the framework of the programs of the two Institutes for Graduate Studies of the University make up a significant and important part of these activities.

MSU and its instructional staff also cooperate on an institutional and individual basis with universities and research centers in various other countries within the framework of the principles of international scientific and cultural cooperation and academic exchange programs. It is also making an effort to further expand such cooperation.

A Traditional Street Scene from Arnavutköy (Istanbul)



ISTANBUL
ARNAVUTKÖYDE BİR SOKAK
M. TÜRKHEU 84

UNIVERSITY ADMINISTRATION

RECTOR

Prof. Gündüz GÖKÇE

VICE-RECTORS

Prof.Dr.Bülent ÖZER
Prof.Sümer SALDIRAY
Prof.Sami ŞEKEROĞLU

SECRETARY GENERAL

Sabit AYASBEYOĞLU

DEANS

Faculty of Architecture

Prof.Önder KÜÇÜKERMEN

Faculty of Fine Arts

Prof.Sadi DİREN

Faculty of Science and Literature

Prof.Dr.Gülçin ÇANDARLIOĞLU

INSTITUTE DIRECTORS

Institute of Natural Sciences

Prof.Dr.İhsan MUNGAN

Institute of Social Sciences And Arts

Prof.Esad SÜHER

DIRECTORS OF ATTACHED SCHOOL

State Conservatory for Polyphonic Music

Assoc.Prof.Nuri İYİCİL

Technical College for Fashion and
Architectural Restoration

Assoc.Prof.Dr.Nuri DOĞAN

DIRECTOR OF THE MUSEUM FOR CONTEMPORARY PAINTING AND SCULPTURE

Prof.Belkis MUTLU

HEADS OF DEPARTMENTS

Department of Architecture

Prof.Esad SÜHER

Department of Town and Regional Planning

Prof.Dr.Mehmet ÇUBUK

Department of Industrial Design

Prof.Önder KÜÇÜKERMEN

Department of Painting

Prof.Sadi DİREN

Department of Sculpture

Prof.Tamer BAŞOĞLU

Department of Theatrical and Scenic Arts

Prof.Sadi ÖZİŞ

Department of Applied Arts

Prof.Beyhan SALDIRAY

Department of Traditional Turkish Handicrafts

Prof.İlhami TURAN

Department of Archeology and Art History

Prof.Dr.Nermin SİNEMOĞLU

Department of Mathematics

Prof.Dr.Belgin MAZLUMOĞLU

Department of Statistics

Prof.Dr.Kemal YOĞURTÇUGİL

Department of Turkish Language and Literature

Prof.Dr.Zeynep KERMAN

Department of Sociology

Prof.Dr.Nevres TURHAN

Department of History

Prof.Dr.Gülçin ÇANDARLIOĞLU

Department of Physics

Prof.Dr.Bilgin AKDEMİR

Department of Instrumental Music and Composition

Department of Musicology

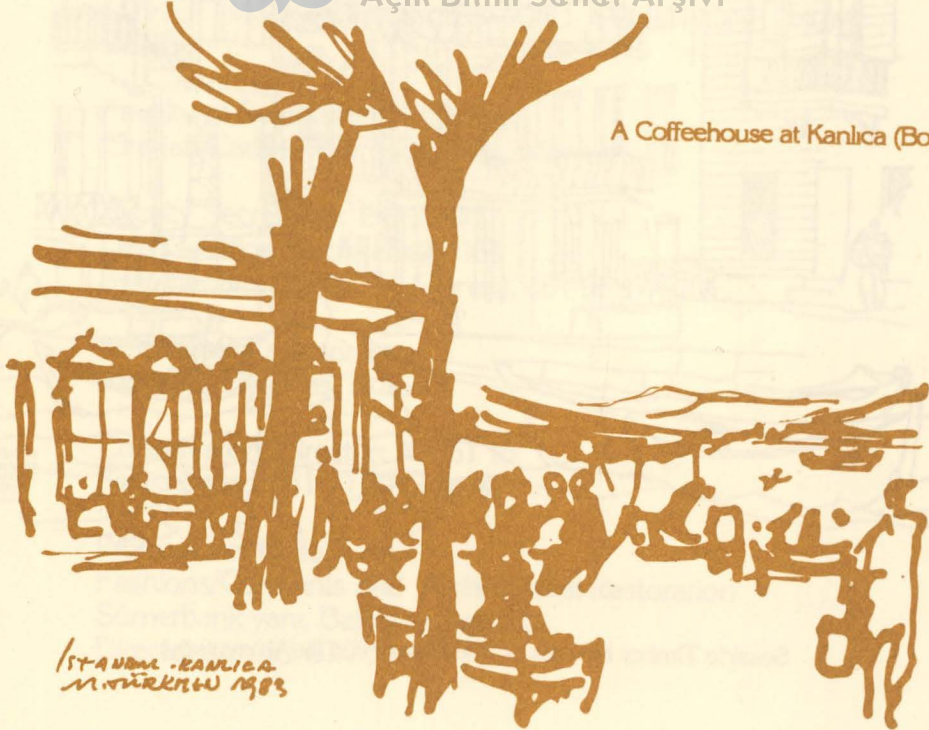
Department of Theatrical and Scenic Arts



MSGSÜ

Açık Bilim Sanat Arşivi

A Coffeehouse at Kanlıca (Bosphorus)



İSTANBUL - KANLICA
M. NURKIN 1983

Mimar Sinan University

Istanbul • Turkey

The Main Entrance of the University



M.S. Güzel Sanatlar Üniversitesi
Merkez Kütüphanesi



0012214

255.07.02.01.05.00/07/0012214

MS
198