

Mimar Sinan Fine Arts University Information Package



MİMAR SİNAN FINE ARTS UNIVERSITY

Mimar Sinan Fine Arts University Information Package



Published by

Mimar Sinan Fine Arts University
International Office

Edited by

Prof. Ayşegül İzer
Prof. Dr. Demet Binan

Translation and Proofreading

Ebru Moçoş
Ebru Bogenç Sasa

Graphic Design

Eda Çağlı Çağlarırnak

Photographs

MSFAU Archive
Prof. Çetin Ergand

Cover Photo

Prof. Çetin Ergand

Print

A4 Ofset A.Ş.

Mimar Sinan Fine Arts University Publications 883

Code: MSGSÜ-R-019/11-Kat1

ISBN 978-605-5005-94-8

500 copies printed.

Copyright © Mimar Sinan Fine Arts University 2019

All rights reserved. No part of this publication may be reproduced or transmitted in any form or by any means, including photocopy, recording or any other information storage and retrieval system without prior permission in writing from the publisher.



This publication was carried out/printed with the financial support from the European Commission Erasmus+ Program.

This publication reflects the views only of the contributors, and the European Commission cannot be held responsible for its contents.



Contents

- 08 **Message from the Rector**
- 10 **Message from the Vice Rector**
- 12 **Our Mission**
- 13 **Our Vision**
- 18 **Fine Arts University in The Heart of Istanbul**
- 24 **About Us**
- 32 **Faculties, Departments And Education**
- 46 **Cultural Venues and Facilities**
- 56 **International Connections**
- 58 **International Relations Office**
- 60 **Medium of Education**
- 62 **MSFAU in Istanbul**
- 64 **Contact Us**



İL MÜDÜRLÜĞÜ

METROPOLİTAN HOTELS BUCHHIMBURG



Rector

Prof. Dr. Handan İnci Elçi

ozelkalem@msgsu.edu.tr

Vice Rectors

Prof. Dr. Demet Binan

rektoryardimciligi1@msgsu.edu.tr

Prof. Dr. Süleyman Kızıltoprak

rektoryardimciligi2@msgsu.edu.tr

Prof. Ayşegül İzer

vicerektor3@msgsu.edu.tr

rektoryardimciligi3@msgsu.edu.tr

Deputy Secretary-General

Assoc. Prof. Dr. Adem Erdem Erbaş

Assistant Secretary-General

Assoc. Prof. Dr. Selçuk Seçkin

Zühre Değirmenci

gensek@msgsu.edu.tr



Message from the Rector

Dear Students and Professors,

MSFAU, which was established in 1882, is the oldest fine arts institution of Turkey. Located in the centre of Istanbul that connects Asia and Europe, our university is also in the artistic and cultural heart of the city.

All our programs; particularly painting, sculpture, design, architecture, photography, cinema, theatre, ballet, opera, literature, history, sociology, archaeology and philosophy, are carried out by valuable professors that shape the culture and art life of our country. Every year, talented students receive education at our university. Our university also possesses the Museum of Painting and Sculpture, which has the richest collection of the country.

We received Erasmus University Charter in April 2004 and started Student Mobility, Staff Mobility and projects under Erasmus+ Program. Yet within the same scope, almost 220 inter-institutional

agreements have been signed in the fields of art, architecture, design, science and literature. Besides, bilateral agreements and protocols have been set with Japan, Kazakhstan, Uzbekistan, Taiwan, Singapore, and Korea, too.

With its developing dynamic structure, including exchange students and international students, and visiting professors, our university moves on with a high intellectual level, précised to education and cultural developments.

I wish you all the best in the academic year you will spend at Mimar Sinan Fine Arts University, which is the oldest and well-established university in the field of art, in Istanbul – which is not only the most important city of Turkey but also one of the most significant cities in the world with its historical background and cultural accumulation.

Prof. Dr. Handan İnci Elçi

Rector



Message from the Vice Rector

Mimar Sinan Fine Arts University took the Erasmus University Charter-EUC in April 2004. We started student and academic staff exchanges and activities, within the framework of Erasmus Program, with the EU universities the same year.

I spent most of my career as an academic and put a lot of effort into the establishment of an International Office at the Mimar Sinan Fine Arts University. I worked as the Erasmus Department Coordinator of the Graphic Design Department for a long time.

It has been a great honor for me to serve as the Vice-Rector for International Relationships since 2019.

Only education can change the world. The term “Education” is derived from three Latin words Educare, Educere, and Educatum – to train, mold, and to lead, to provide the means for the student to go further and explore. It is vital for us to pass down accrued knowledge to the next generation and to nurture young people,

enabling them to grow into well-rounded personalities.

A growing focus has accompanied the start of the new millennium on universities, students, and the need to re-shape their role, friendship, and nature. Exchange programs help transform educational practice. I am delighted that Erasmus+ Program enables opportunities for the students to gain learning experience in EU and non-European countries.

What is Erasmus+? It is the Program to support education, training for students, academic staff, educators, and institutions. Erasmus+ programs enable students from all over the world to study at higher educational institutions in graduate levels in the fields of science, art, architecture, and design.

Education makes it possible for people to stand out as equal with all the other individuals from different walks of life. The future belongs to those who believe the power of education, and to youth working with multilingual and international contexts.

We must be able to give our young people the tools that will allow them to find their path to happiness, fulfilment, and a place in society.

Welcome to Turkey,

Welcome to Mimar Sinan Fine Arts University.

Prof. Ayşegül İzer

Vice Rector

International Office Coordinator

Our Mission

Our university, which has been operating as the first educational institution of the country in the fields of art, architecture and culture since 1882, is aware of the responsibility of raising the leading names in these fields and that it will shape the future of the society. The mission of our university is to educate individuals who are faithful to Atatürk's Principles, who respect diversity and ethical values, who are sensitive to cultural and natural heritage, who have strong environmental consciousness, who can globalise the national, who embrace interdisciplinary research, who are creative and innovative, who maintain critical thinking, and who aim to contribute to the development of the society.



Our Vision

The vision of our university is to be an institution educating free-thinking individuals who have adopted the critical approach towards art, design and science, who are committed to universal values and respectful to their cultural heritage.



Fundamental Values

Commitment to Atatürk's Principles and Reforms:

Commitment to the values of our Republic is fundamental in our education programs and institutional structure.

Respect for diversity: It is supported to improve creativity while preserving the existence of different ideas, lifestyles and cultural diversity.

Commitment to critical thinking and ethics:

In academic research and artistic production, an approach that appreciates critical thinking and ethical values is adopted.

Embracing natural and cultural heritage:

Respecting cultural and natural heritage, historical accumulation and developing environmental awareness are among the core values of our institution.



Inquisitive, creative and innovative approach:

Innovative and creative approaches are the essence of education and in the activities carried out to contribute to society.

Entrepreneurial and pioneering role: With our experience and contemporary approach, we play a pioneering and leading role in our co-operations.

Participant, transparent and egalitarian:

management Participation, transparency and egalitarianism are embraced in the management, decision and production processes.

To train competent and qualified individuals:

Specialization is prominent in our education programs where raising competent and qualified individuals is a priority.

Awareness of contributing to society: With its deep knowledge accumulation and outputs, our university prioritizes contributing to society.

Istanbul as
the only city
in the world
situated on
two continents
is known as
the “capital of
capitals”.



Fine Arts University in the Heart of Istanbul

Istanbul as the only city in the world situated on two continents is known as the “**capital of capitals**”.

It ruled continents first as the capital of Roman Empire, then as the capital of the Eastern Roman Empire creating immense geographies of peace. Istanbul, which became the capital of the Ottoman Empire in later years, proudly, carries the splendor of its past while at the same time marches towards modernity with firm steps in our day.



Istanbul has almost always been one of the most important and great cities of the world. Today, it is one of the most important cultural capitals of the world, hosting tens of festivals, concerts, exhibitions, biennials, and cultural events every year. The city has more than a hundred private and public museums, and tens of arts and culture centers.

Mimar Sinan Fine Arts University is located on the European side of Istanbul, in the center of the city. It is located next to the Taksim-Karaköy-Beşiktaş culture zones. It has its own museum and arts and culture center. Mimar Sinan Fine Arts University Istanbul Museum of Painting and Sculpture and Tophane-i Amire and Arts and Culture Center are located in Tophane. Tophane is the one of the significant cultural zones of the city.



**Mimar Sinan
Fine Arts
University** is
the oldest fine
arts education
institution in
Turkey.
Since **1882**.





About Us

The institution was founded on January 1, 1882 by the directorship of the art historian, archaeologist, curator, architect and painter Osman Hamdi Bey, as “**Mekteb-i Sanayi-i Nefise-i Şahane**” - **Imperial Fine Arts School** and it was the first institution offering education in art and architecture. In 1928, the name of Sanayi-i Nefise Mektebi was changed as **Fine Arts Academy**, thus our institution became the first Fine Arts Academy of the country.



In 1982, when all the institutions of higher education were brought under the roof of the Council of Higher Education (YÖK), our name was changed as **Mimar Sinan University**, and Fine Arts, Architecture, Science and Letters faculties, State Conservatory, Science and Technology and Social Sciences Institutes got involved in the University.



Mimar Sinan Fine Arts University is the oldest fine arts education institution in Turkey. Our university, a well-established institution taking initials as a mission, was initiated to conduct education with occidental and contemporary methods, in the late Ottoman period of 19th century. MSFAU has always had a pioneering role in education of fine arts, architecture and design from past to present. It carries a rich background in Turkish creative art scene as well as fine arts, design and architecture. It is the most popular fine arts institution and privileged to be able to share these earnings from east and west with experiences from past and present.

MSFAU carries the responsibility of ensuring creative and high quality professional undergraduate and graduate programs; and aims to prepare innovative, creative, competitive freethinker students who have developed senses of culture, art, aesthetic, environment and social awareness. The University also encourages research and development in arts, design and science to share the knowledge with national and international institutions as well as with the society. The core values are leadership, creativity, reliability, innovation, modernity, freedom of speech and equality, which define our tradition and practice.

Education programs are supported by practice and collaborations. Students and academic staff are encouraged to foster their creativity and innovation capacity. Culture sector, various industries and public bodies in different activities enable to carry the knowledge and experience of external parties from their professional practice to the curriculum.



3 Faculties

1 State Conservatory

1 School

1 Vocational School

3 Institutes

32 Departments

**18 Research
and Application
Centers**



Faculties Departments and Education



The University aims to provide professional training in bachelor level and research and innovation in master's and doctorate levels.

Majority of the programs offer 4 years of Bachelor (BA), 2 years of Master of Science/Art (MSc, MSSc, MA) and 4 years of Doctorate (PhD)/Proficiency of Arts (DA) degree programs.

Faculty of Fine Arts

Painting (BA, MA, DA)

Sculpture (BA, MA, DA)

Graphic Design (BA, MA, DA)

Ceramics and Glass Design (BA, MA, DA)

Textile and Fashion Design (BA, MA, DA)

Traditional Turkish Arts (BA, MA, DA)



Stage and Costume Design (BA, MA, DA)

Cinema and TV (BA, MA, DA)

Photography (BA, MA, DA)

Basic Art Education (MA, DA)

Conservation and Restoration of Artworks (BA)

Faculty of Architecture

Architecture (BA, MSc, PhD)

City and Regional Planning (BA, MSc, PhD)

Industrial Design (BA, MSc, PhD)

Interior Architecture (BA, MSc, PhD)



Faculty of Science and Letters

Sociology (BA, MSSc, PhD)

Statistics (BA, MSc, PhD)

Turkish Language and Literature (BA, MSSc, PhD)

Physics (BA, MSc, PhD)

History (BA, MSSc, PhD)

Mathematics (BA, MSc)



Archeology (BA, MSSc, PhD)

History of Art (BA, MSSc, PhD)

Philosophy (BA, MSSc, PhD)

Educational Sciences

Western Languages and Literature

Informatics (MSc) (Rectorate)

Istanbul State Conservatory

Music (BA, MA, DA)

Musicology (BA, MSSc)

Performing Arts (BA, MA, DA)



School and Vocational School

**Conservation and Restoration of
Moveable Cultural Properties**

Architectural Restoration

Clothing Production Technologies



Research and Application Centers

Mimar Sinan Research and Application Center

Research and Application Center for Turkish Art History

Prof. Sami Şekeroğlu Cinema-TV Center

Research and Application Center for Urban Planning

Research and Application Center for Atatürk's Principles and History of Turkish Revolution

Research and Application Center for Industrial Product Design

Research and Application Center for Anatolian Culture and Art



Research and Application Center for Construction Practices

Research and Application Center for Sculpture Design

Research and Application Center for Cultural Properties and Works of Art

Research and Application Center for Sustainable Urban Transformation

Research and Application Center for Textile and Fashion Design

Research and Application Center Graphic Design

Research and Application Center for Photography

Research and Application Center for North Aegean Archaeology

Research and Application Center for Women's Studies and Gender

Ahmet Hamdi Tanpınar Literature Research and Application Center

Continuing Education Center

1 Museum

1 Arts and Culture
Center

1 Auditorium

2 Exhibition Halls

3 Conference Halls

1 Cinema Theatre

1 Performance

Theatre

1 Social Facilities



Cultural Venues and Facilities

Mimar Sinan Fine Arts University has its own attractive, modern exhibition and performance spaces located at the very center of the city.

Istanbul Museum of Painting and Sculpture

Istanbul Museum of Painting and Sculpture is **Turkey's first museum of modern art with a collection of over 10,000 works**. The institution was inaugurated in 1937 with the mission of collecting and exhibiting art from the Late Ottoman period onwards. The museum is set to reopen in 2020 in a renovated structure at the center of the city to offer critical and innovative discussions on art and culture. The institution prioritizes education and is committed to creating local, regional, and international collaborations.



Tophane-i Amire Arts and Culture Center

Tophane-i Amire Arts and Culture Center (The Imperial Factory of Cannons and Artillery) is thought to have been built around 1453-1470. The construction was started by Mehmed the Conqueror and annexes were added during the reigns of Beyazid II and Süleyman the Magnificent.

The building restored by MSFAU has been in use as an arts and culture center since 1998.



Exhibition Halls

Mimar Sinan Fine Arts University has two exhibition halls in Fındıklı, in main building, apart from the Tophane-i Amire Arts and Culture Center and MSFAU Istanbul Museum of Painting and Sculpture. **Mimar Sinan and Osman Hamdi Bey Halls** are the venues used for student project and workshop exhibitions during the academic year.



Conference Halls Cinema and Performance Theatres and Auditorium

There are three conference halls and an auditorium in total, in Fındıklı and Bomonti buildings. **Sedat Hakkı Eldem Auditorium** is audio-visually fully equipped. **The Cinema Theatre of Prof. Sami Şekeroğlu Cinema TV Center** is located at Balmumcu. **Şebnem Selşik Aksan Performance Theatre** is located at Bomonti.



Kilyos Social Facilities Baykuş Beach

Kilyos Baykuş Beach is located on the northern coast of İstanbul, by the Black Sea. Baykuş Beach is open during the day in the summer. There are also bungalows for accommodation.



Application Workshops and Creative Facilities

MSFAU has well-equipped and wide range of workshops/studios that cover diverse areas of art and design. Some are as follows:

Lithography, Serigraphy, Engraving, Stained glass, Fresco, Tapestry workshops; Metal, Wood, Stone, Jewelry and Miniature sculpture studios; Glass Blowing and Hot Shop, Mechanical Printing on Ceramic and Glass Studios; Graphic Design workshops; Textile and Fashion Screen-printing, Weaving studios; Model making workshops; Restoration Laboratory; Photography and TV Studios; Film Restoration laboratory.

There are almost **220 agreements** with over **25 countries** across EU through Erasmus+ program.



International Connections

Our university has an active international network for students, administrative and academic staff exchanges, research, projects, conferences, lectures, and workshops. MSFAU is a holder of the Erasmus Charter, and an active participant of the **Erasmus+ Program**. The University is a member of **Mevlana Exchange Program**, too. Students and academic staffs are exchanged within the scope of those programs.

We have almost 220 bilateral agreements with over 25 countries across EU through Erasmus+ program. In addition, we have collaborations with art institutions in **Japan, Kazakhstan, Uzbekistan, Taiwan, Singapore, and Korea**.



International Relations Office

International Office of MSAU was established within the body of **Rectorate in February 2002.**

The International Office coordinates Erasmus student and staff mobility along with bilateral exchanges and manages all of the international activities and programs.



International Office provides orientation to students on **Erasmus+, Mevlana and other exchange programs.** Outgoing students are assisted by giving advice and necessary information in order to carry out the international procedures. The Office provides orientation to international students on academic and campus life at Mimar Sinan Fine Arts University, by assisting and coordinating their communication with academic and administrative units.

The office coordinates the relations with the Educational Programs of the European Commission as well as **Asian League of Institutions of the Arts (ALIA), European Conservatories Association (AEC), European Association for Architectural Education (EAAE), International Association Of Universities And Colleges of Arts, Design And Media (CUMULUS).**



For Application

Erasmus+ and other international exchange programs have different calendars and application requirements; **please contact international office** for details.

ulik@msgsu.edu.tr

Medium of Education

Teaching Language of the University is Turkish. However, there are courses in English for exchange students. On the other hand, education at art and design departments are studio based and language is not a barrier, since the students directly interact with lecturers.



Academic Year

The semesters consist of **14 weeks** of lectures and two weeks of final exams.

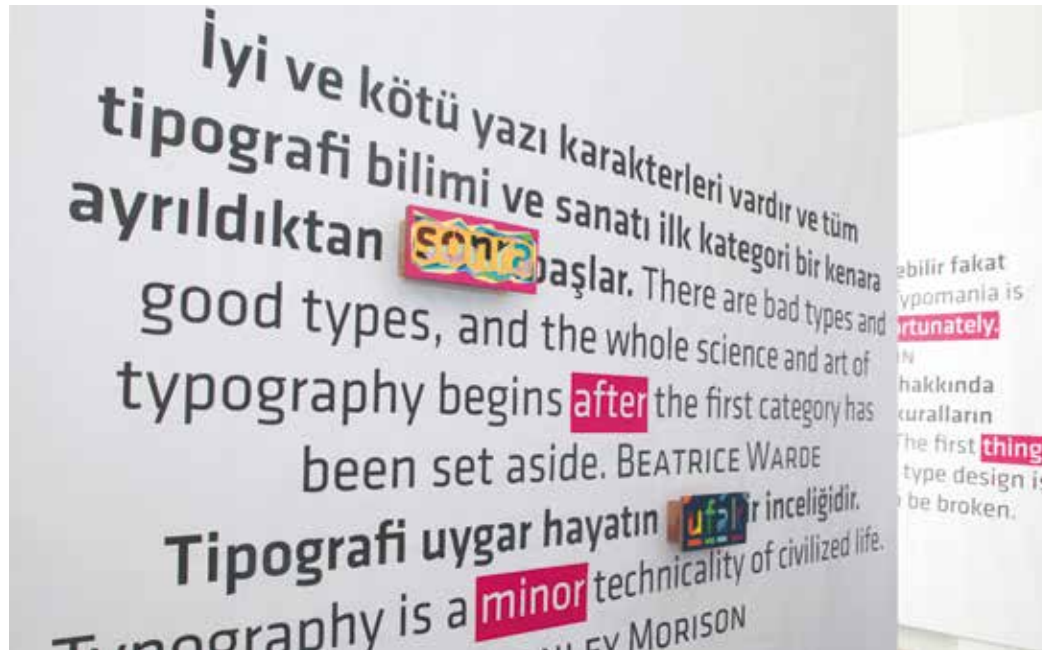
Fall semester **October-January**

Spring semester **February-June**

Tuition Fees

There is no tuition for exchange students accepted under Erasmus+ and/or bilateral agreements.

The average cost of living is around €500.



MSEFAU in Istanbul



Fındıklı

1

**Faculty of Fine Arts
Faculty of Architecture**
Meclis-i Mebusan Caddesi
No:24 Fındıklı 34427 Beyoğlu



Bomonti

2

Faculty of Science & Letters
Cumhuriyet Mahallesi
Silahşör Caddesi
No:71 Bomonti 34380 Şişli



Beşiktaş

3

State Conservatory
Dolmabahçe Caddesi
No:6 34357 Beşiktaş



4

Research Centers
Çırağan Caddesi No:2
34349 Beşiktaş



Tophane

5

**Istanbul Museum of Painting
and Sculpture**
Meclis-i Mebusan Caddesi
No:6 Tophane 34433 Beyoğlu



6

**Tophane-i Amire Arts
and Culture Center**
Kılıçlı Paşa Defterdar Yokuşu
No:2 34433 Beyoğlu



7

Tophane Nusretiye Pavillion
Meclis-i Mebusan Caddesi No:2
Beyoğlu 34425 İstanbul



Balmumcu

8

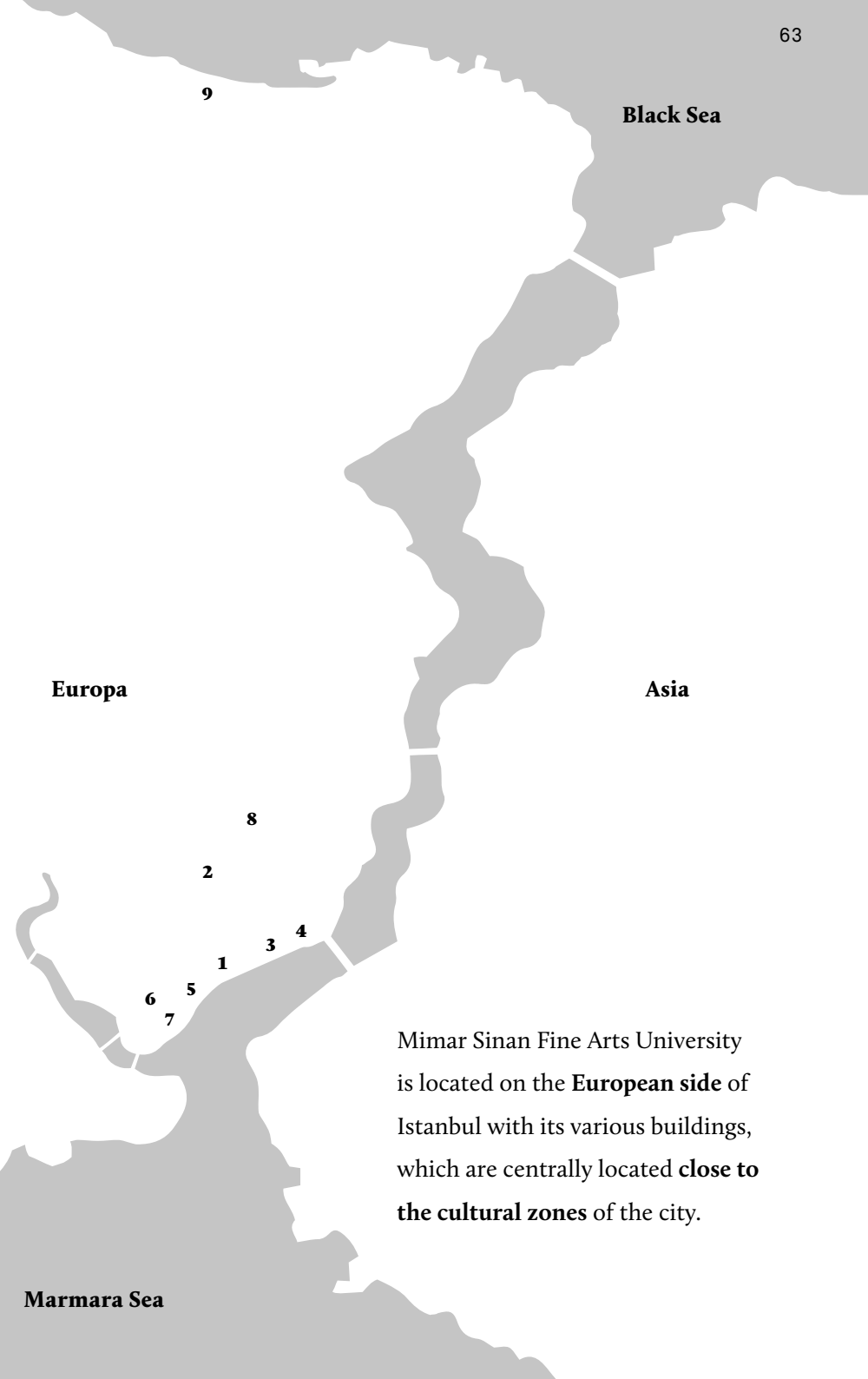
Cinema-TV Department
Gayrettepe Okul Sokak
No:1 34349 Beşiktaş



Kilyos

9

Baykuş Beach
Sarı Çiçek Sokak No:54
34450 Sarıyer



Mimar Sinan Fine Arts University is located on the **European** side of Istanbul with its various buildings, which are centrally located **close to the cultural zones** of the city.

Contact Us

Rector

Prof. Dr. Handan İnci Elçi
ozelkalem@msgsu.edu.tr

Vice Rector

International Office Coordinator

Erasmus+ Institutional Coordinator

Prof. Aysegül İzer
vicerektor3@msgsu.edu.tr
rektoryardimciligi3@msgsu.edu.tr
ulik@msgsu.edu.tr

Assistant Coordinator

Erasmus+ Outgoing Staff Mobility

Cihan Oktay
erasmus.personel@msgsu.edu.tr

Erasmus Outgoing Student

Arda Hacıyusufoğlu
erasmus.outgoing@msgsu.edu.tr

Erasmus Incoming Student and Staff

Erasmus Agreements

Ebru Bogenç Sasa
erasmus.staff@msgsu.edu.tr
erasmus.agreement@msgsu.edu.tr
erasmus.incoming@msgsu.edu.tr

Exchange Grant

Serpil Kayloncu

Non-Erasmus/Cooperation Agreements and Exchange

Mert Çağıl Türkay
Ebru Moçoş
bilateral@msgsu.edu.tr

Academic Networks,

International Partnership

Ebru Moçoş
ulik@msgsu.edu.tr

Mevlana Exchange Program

Prof. Dr. Selin Gündeş
mevlana@msgsu.edu.tr

Meclis-i Mebusan Caddesi

No:24 Fındıklı Beyoğlu


Istanbul 34427 Turkey


+90 212 252 16 00


msgsu.edu.tr

International Office

+90 212 244 04 36


 msgsuniversite

 msgsuniversite

 msgsuniversite

 Mimar Sinan Fine Arts University

Erasmus International Office

 msgsu_msfau_international

